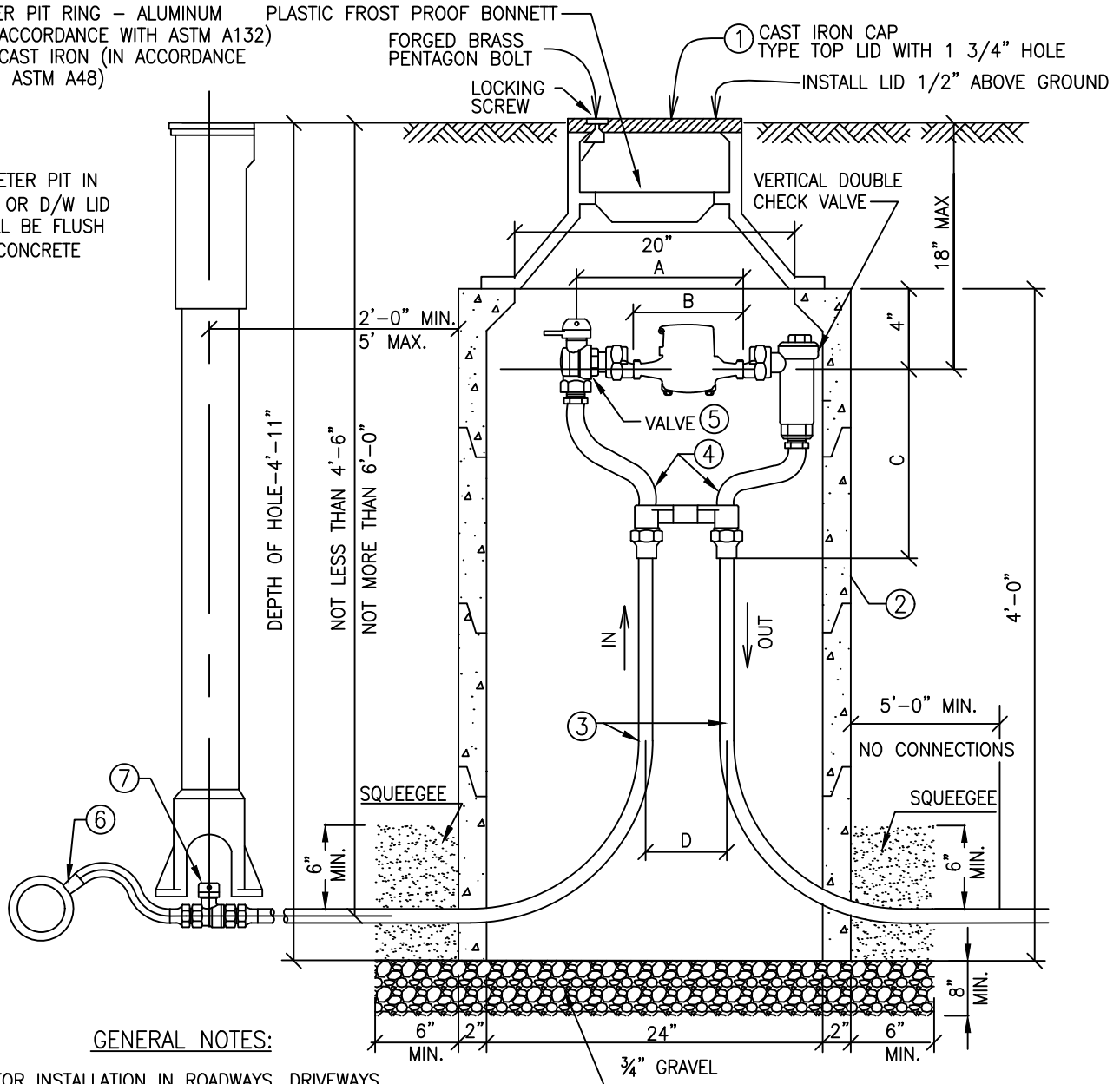


METER PIT RING - ALUMINUM (IN ACCORDANCE WITH ASTM A132) OR CAST IRON (IN ACCORDANCE WITH ASTM A48)

IF METER PIT IN S/W OR D/W LID SHALL BE FLUSH W/ CONCRETE



GENERAL NOTES:

1. FOR INSTALLATION IN ROADWAYS, DRIVEWAYS, SIDEWALKS, OR PARKING AREAS PRIOR APPROVAL REQUIRED.
2. METER PITS SHALL BE 24" DIAMETER PRECAST CONCRETE PIT, 48" TALL. METER PIT COVER TO BE A CAST IRON ASSEMBLY WITH PLASTIC INNER FROST LID AND C.I. TOP LID DRILLED WITH A 1 3/4" HOLE FOR METER SENSOR PAD. 4" DIAMETER RECESS CENTERED ON LID.
3. ADJUSTMENT RINGS SHALL BE 2", 3", 4" OR 6" IN HEIGHT AND SHALL BE INSERTED BETWEEN THE DOME AND TOP RING.
4. NO CONNECTIONS OR CHANGES IN PIPE DIAMETER SHALL BE MADE FROM THE MAIN/TAP TO A DISTANCE OF FIVE FEET BEYOND THE METER PIT WALL ON THE OUTLET SIDE.
5. LID SHALL SAY "WATER METER"

LIST OF MATERIALS

1. RING AND COVER - J'MARK NO. J-2290 (81 LBS.) OR APPROVED EQUAL WITH INTERNAL FROST LID.
2. METER PIT - ARCO NO. 24-4 PRECAST MANHOLE (24" DIA.) OR APPROVED EQUAL.
3. SERVICE LINE - COPPER TUBING TYPE K Q-LING OR POLY LINE SIDR 7, SAME DIAMETER AS THE METER.
4. METER YOKE ASSEMBLY - FORD 80 SERIES COPPERSETTER WITH OUTLET VALVE BHC83W-22-33 (3/4" YOKE), VBHC 84W-22-44 (1" YOKE) OR APPROVED EQUAL.
5. SHUT-OFF VALVE.
6. CORPORATION STOP. A SADDLE SHALL BE REQUIRED.
7. 3/4" FORD B-22-333 OR EQUAL
1" B-22-444

METER SIZE	A	B	C	D
3/4"	14-1/4"	9-5/16"	8-15/16"	5"
1"	17-1/4"	11-1/16"	11-1/4"	6"



13031 E Caley Ave, Centennial, Colorado 80111
Ph: (303) 790-4830 Fax: (303) 790-1718
© Copyright 2007 All Rights Reserved

**OUTSIDE DOMESTIC METER
- 3/4" AND 1" METERS**

REVISION DATE:
03/01/2013

FIGURE NO.
W-1

SHEET NO.
1 of 1