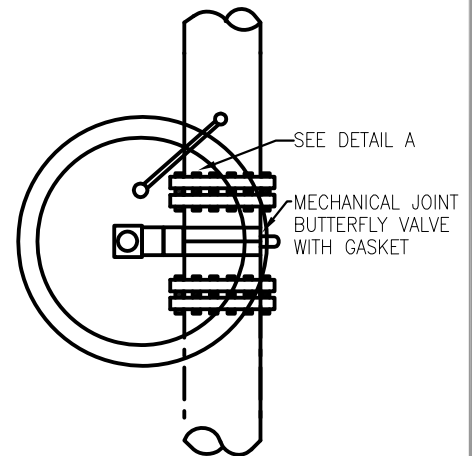
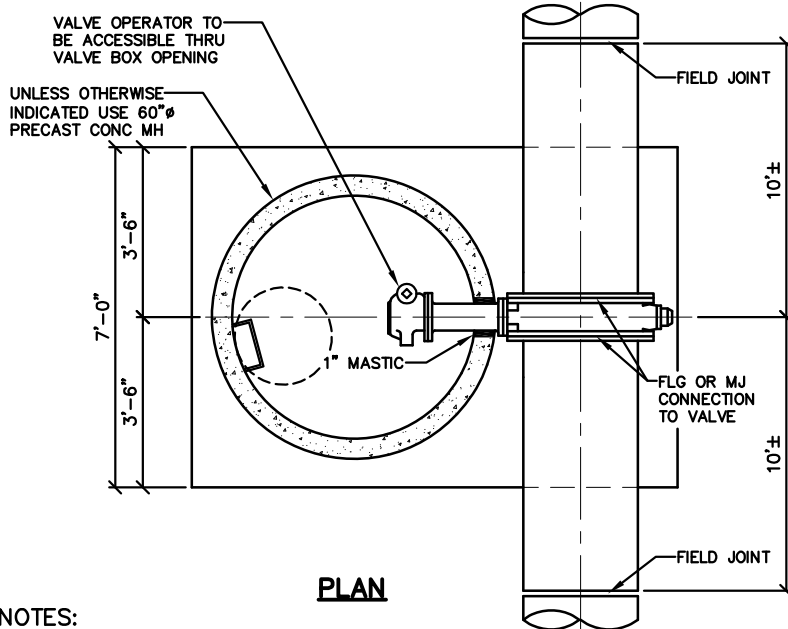
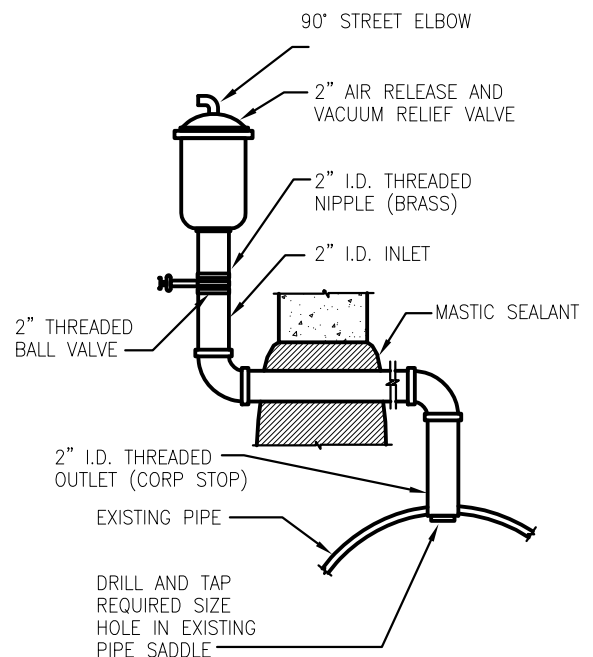
**ELEVATION****DETAIL B****PLAN****NOTES:**

1. 1 1/2" CORP STOP MAY BE DIRECT TAPPED TO 16" AND LARGER MAINS.
2. THE DISTANCE BETWEEN RUNGS, CLEATS AND STEPS SHALL NOT EXCEED 12 INCHES AND SHALL BE UNIFORM THROUGHOUT THE LENGTH OF THE LADDER.

**DETAIL A**

ARAPAHOE COUNTY
Water and Wastewater Authority

13031 E Caley Ave, Centennial, Colorado 80111
Ph: (303) 790-4830 Fax: (303) 790-1718
© Copyright 2007 All Rights Reserved

**BUTTERFLY VALVE 18" AND
ABOVE MAINLINE**

REVISION DATE:
9/7/2005

FIGURE NO.

W-30

SHEET NO.

1 of 1