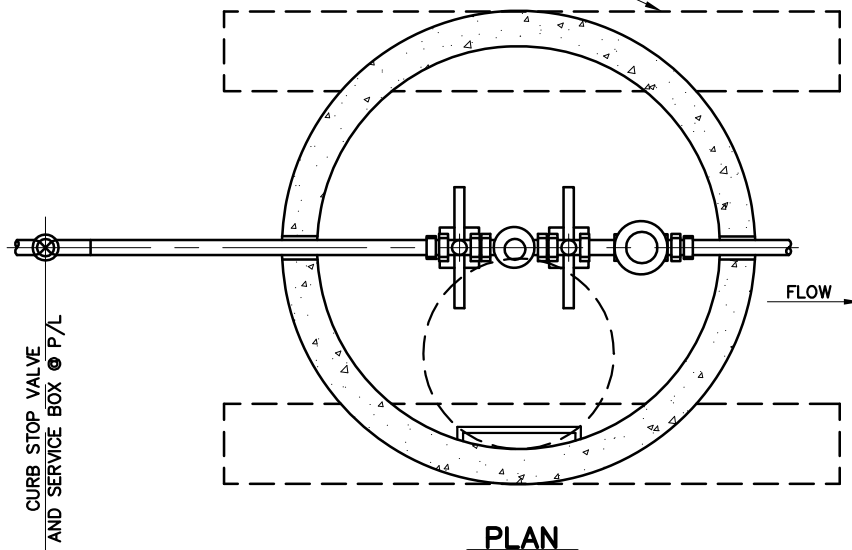
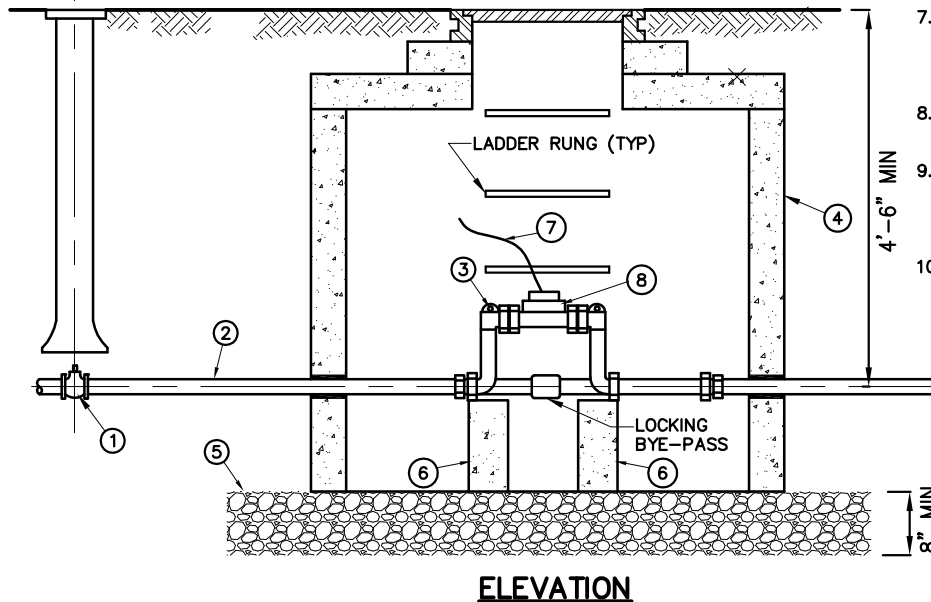


CONC MH BASE BEAMS REQD FOR METER IN STREET OR PARKING AREA



NOTES:

1. METER VAULT SHALL BE INSTALLED IN LANDSCAPED AREA UNLESS APPROVED BY ACWWA.
2. CURB STOP SHALL BE 24" AND NO GREATER THAN 60" FROM THE INLET SIDE OF THE METER VAULT, IN LANDSCAPED AREA UNLESS APPROVED BY ACWWA.
3. FOR VAULT INSTALLATIONS IN ROADWAYS AND DRIVEWAYS, WHEN APPROVED, MH BASE BEAMS ARE REQD. METER VAULT MAY NOT BE INSTALLED IN PARKING AREA.
4. NO CONC FLOOR ALLOWED IN METER VAULT.
5. 3/4" CRUSHED ROCK.
6. NO CONNECTIONS OF ANY TYPE, PIPE BENDS, OR CHANGES IN PIPE SIZE ARE PERMITTED BETWEEN THE TAP AND 5 FT BEYOND THE OUTLET SIDE OF THE METER VAULT, EXCEPT AS SHOWN ON THIS DETAIL.
7. DISTANCE BETWEEN RUNGS, CLEATS AND STEPS SHALL NOT EXCEED 12" AND SHALL BE UNIFORM THROUGHOUT THE LENGTH OF THE LADDER.
8. VAULT WALL PENETRATIONS SHALL BE GROUTED WITH CONC.
9. COPPERSETTER OR METER YOKE SHALL BE NO MORE THAN 12" HIGH. COPPERSETTER OR YOKE WITH BYPASS SHALL HAVE LOCKING BYPASS VALVE.
10. STEPS SHALL BE ALIGNED PERPENDICULAR TO SERVICE LINE.



DETAILS:

- ① CURB STOP
- ② TYPE K COPPER TUBING
- ③ COPPERSETTER/METER YOKE WITH LOCKABLE BYPASS
- ④ 48" CONC MH WITH FLAT LID
- ⑤ CONC BLOCK SUPPORTS 4" x 4" x 24"
- ⑥ SIGNAL WIRE TO ITRON ERT INSTALLED BY ACWWA
- ⑦ METER INSTALLED BY ACWWA
- ⑧ WATER METER

SIZE	FORD CUSTOM SETTER		MUELLER	
		CAT. No.	TYPE	CAT. No.
1 1/2"	FLANGED KEY VALVE	V V76-12B-11-66 1" BY-PASS	FLANGED ANGLE METER	H-1423
1 1/2"	FLANGED ANGLE BALL VALVE	VBB76-12B-11-66 1" BY-PASS	FLANGED BALL ANGLE	H-2423
2"	FLANGED KEY VALVE	V V77-12B-11-77 1-1/4" BY-PASS	FLANGED ANGLE METER STOP	H-1423
2"	FLANGED ANGLE BALL VALVE	VBB77-12B-11-77 1-1/4" BY-PASS	FLANGED ANGLE BALL VALVE	H-2423

ARAPAHOE COUNTY
Water and Wastewater Authority

13031 E Caley Ave, Centennial, Colorado 80111
Ph: (303) 790-4830 Fax: (303) 790-1718
© Copyright 2007 All Rights Reserved

OUTSIDE DOMESTIC METER 1-1/2" METER & UP

REVISION DATE:
03/01/2013

FIGURE NO.
W-2

SHEET NO.
1 of 1