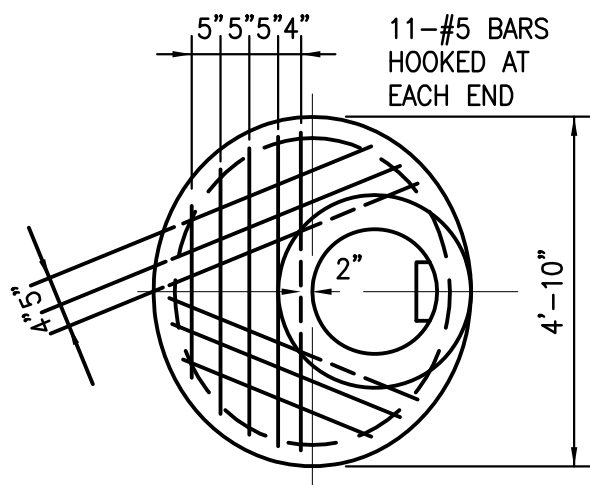
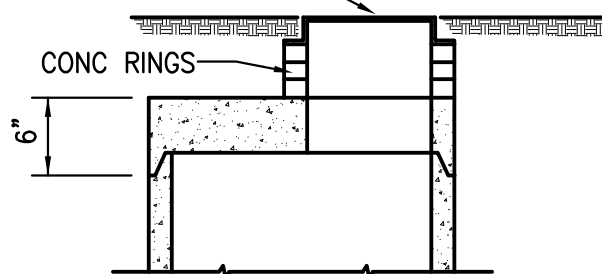
**NOTE:**

1. STEPS SHALL BE LOCATED DIRECTLY ABOVE THE EXIT PIPE IN A STRAIGHT LINE, 12" ON CENTER (O.C.) VERTICALLY.
2. 60" DIA. MANHOLES SHALL HAVE A 30" STANDARD RING AND COVER, J-MARK NO. J-1361 OR APPROVED EQUAL.
3. 48" DIA. MANHOLES SHALL HAVE A 24" STANDARD RING AND COVER, J-MARK NO. J-1161 OR APPROVED EQUAL.
4. MORTAR SHALL BE USED ON THE INSIDE OF THE BARREL AT ALL JOINTS (HYDRAULIC CEMENT).
5. ALL MANHOLES IN EXCESS OF 20' IN DEPTH SHALL HAVE AN INTERMEDIATE GRATING LOCATED AT THE CENTER OF THE DEPTH & SHALL BE 60" DIA.
6. THE WORD "SEWER" SHALL BE BOLDLY CAST ON ALL COVERS.
7. WHEN THE DISTANCE BETWEEN SEWER INVERT AND TOP OF THE MANHOLE COVER IS LESS THAN 8'6", A FLAT TOP MANHOLE SHALL BE CONSTRUCTED.
8. NO MANHOLE INSERTS ALLOWED.



STD RING AND COVER



**ALTERNATE FLAT LID/
INTERMEDIATE PLATFORM**