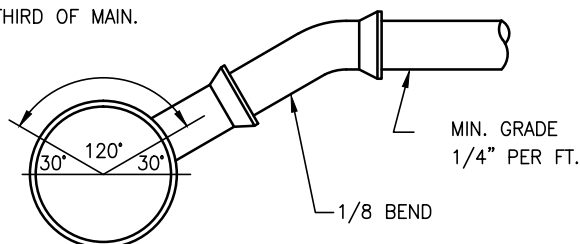
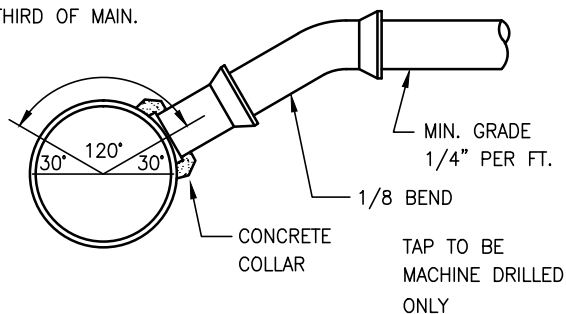


CENTER OF WYE BRANCH
TO BE PLACED IN UPPER
THIRD OF MAIN.



1/8 BEND CONNECTION TO TEE

CENTER OF WYE BRANCH
TO BE PLACED IN UPPER
THIRD OF MAIN.

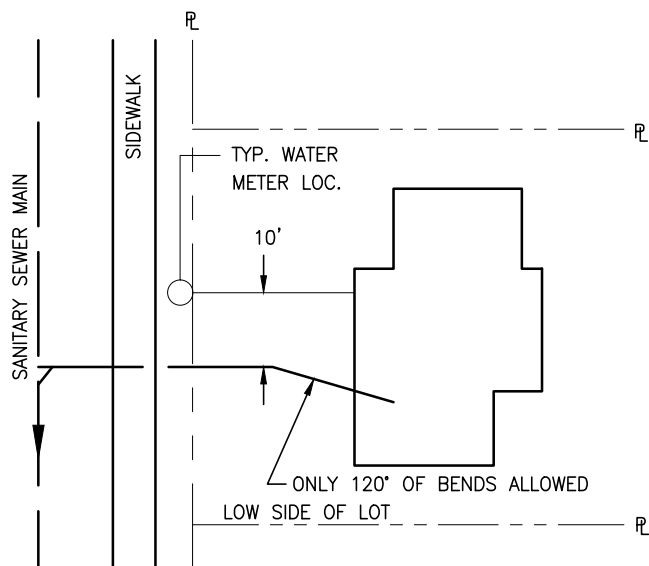


THIS APPLICATION TO BE USED
ONLY WITH ACWWAS APPROVAL

1/8 BEND & SADDLE CONNECTION

NOTES:

1. THE BARREL SECTION SHALL BE SUPPORTED THROUGHOUT ITS LENGTH.
2. SERVICE TAPS SHALL BE IN-LINE WYE OR MACHINE TAPPED. HAND TAPS SHALL NOT BE ALLOWED.
3. THE MIN. SERVICE LINE GRADE SHALL BE 1/4" PER FT.
4. JOINTS SHALL BE WATER TIGHT.
5. WHEN SERVICE STUB-INS ARE INSTALLED WITH THE SEWER MAIN, THEY SHALL BE EXTENDED AT LEAST TO PROPERTY LINE AND SHALL BE PLUGGED WITH A 2x4 MARKER FOR LOCATION OF END.



SEWER SERVICE

ARAPAHOE COUNTY
Water and Wastewater Authority

13031 E Caley Ave, Centennial, Colorado 80111
Ph: (303) 790-4830 Fax: (303) 790-1718
© Copyright 2007 All Rights Reserved

SANITARY SEWER SERVICE

REVISION DATE:
9/7/2005

FIGURE NO.

SS-2

SHEET NO.

1 of 1